

Standard Plus

HOMOGENEOUS COMPACT VINYL

The colourful
linear pattern
for heavy traffic



Powered by



 **Tarkett**

Standard Plus



Stone Grey

© 21003 924 □ 21005 924



Grey

© 21003 498 □ 21005 498



Light Grey

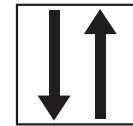
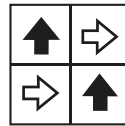
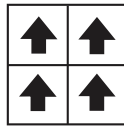
© 21003 497 □ 21005 497



Warm Grey

© 21003 911 □ 21005 911





Medium Blue

© 21003 492 □ 21005 492

Dark Blue

© 21003 493 □ 21005 493



Lime

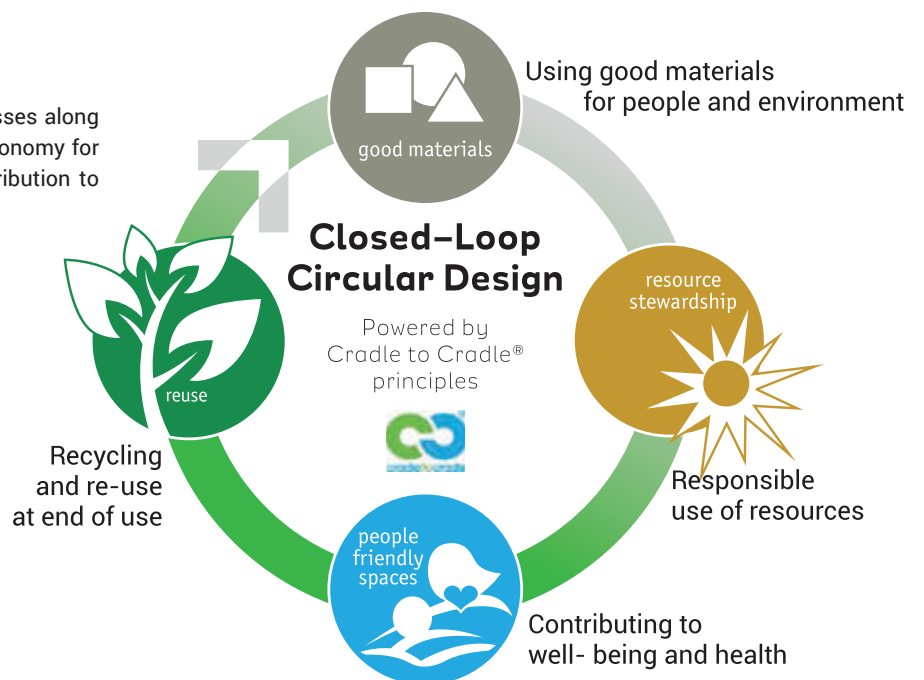
© 21003 922 □ 21005 922

Dark Green

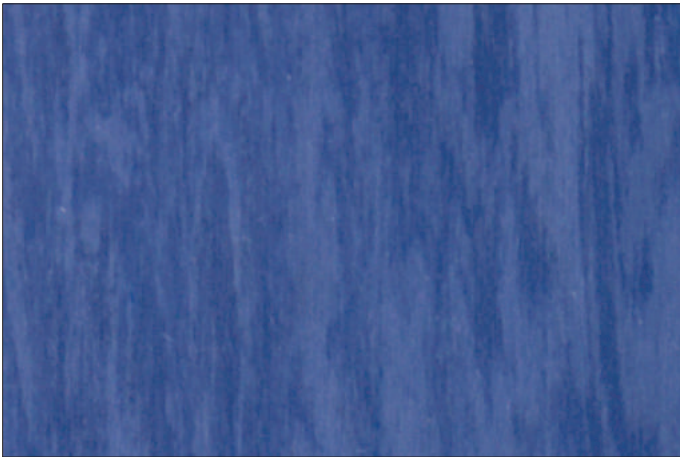
© 21003 921 □ 21005 921

SUSTAINABILITY @ TARKETT

We re-think our products and manufacturing processes along the principles of «Cradle to Cradle®» and circular economy for the ongoing reuse of materials for a positive contribution to people, environment and economic development.



Standard Plus



Royal Blue

© 21003 920 □ 21005 920



Purple

© 21003 918 □ 21005 918



Red

© 21003 488 □ 21005 488

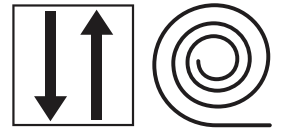


Orange

© 21003 917 □ 21005 917



Standard Plus



Sand

© 21003 913 □ 21005 913




Gold

© 21003 916 □ 21005 916



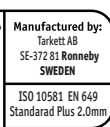
Standard Plus

TECHNICAL DATA	STANDARD	STANDARD PLUS 2.0 mm
CLASSIFICATION		
Classification	EN ISO 10581 EN ISO 10874	Homogeneous single layered vinyl flooring Commercial: 34 / Industrial: 43
Wear layer binder content	EN ISO 10581	Type II
TECHNICAL CHARACTERISTICS		
Total thickness	EN ISO 24346	2.0 mm
Total weight	EN ISO 23997	3300 g/m ²
Wear layer thickness	EN ISO 24340	2.0 mm
Surface treatment		PUR
Form of delivery	EN ISO 24341 Sheet (rolls) EN ISO 24342 Tiles (box)	Approx. 23 running metres x 200 cm Art. no. 21003 _ _ _ 3 digit colour number 61 x 61 cm - 14 tiles/box = 5.21 m ² Art. no. 21005 _ _ _ 3 digit colour number
PERFORMANCES FOR CE MARKING REQUIREMENTS (EN 14041)		
Declaration of Performance	EN 14041	0019-0025-DoP-2013-07
Reaction to fire	EN ISO 13501-1 EN ISO 9239-1 EN ISO 11925-2	Bfl-s1 ≥ 8 kW/m ² Pass
Marine equipment	IMO FTPC Part 5 and 2 IMO Res. A653	 0575
Static electrical discharge	EN 1815	< 2,0 kV
Thermal conductivity	EN 12667	Approx. 0.01 m ² K/W
Slip resistance	EN 13893	μ ≥ 0,3
TECHNICAL PERFORMANCES		
Residual indentation	EN ISO 24343-1	Required value: ≤ 0.10 mm Best measured value*: 0.04 mm
Slip resistance	DIN 51130	R9
Castor chair	ISO 4918	Suitable
Light fastness	EN ISO 105-B02	≥ 6
Dimensional stability	EN ISO 23999	≤ 0.40% for rolls ≤ 0.25% for tiles
Chemical resistance	EN ISO 26987	Good resistance
Bacteria resistance	ISO 846 Part C	Does not favour growth
Underfloor heating		Suitable - max. 27°C
Seam strength	EN 684	Average value: ≥ 240 N/50mm Individual values: ≥ 180 N/50mm
ENVIRONMENTAL PERFORMANCES		
Total VOC emissions	ISO 16000-9	≤ 10 µg/m ³ (after 28 days)
COLOURS		
30 for rolls - 10 for tiles		

The above information is subject to modification for the benefit of further improvement.



*TVOC AT 28 DAYS



Standard Plus	Welding Rod No.	Standard Plus	Welding Rod No.	Standard Plus	Welding Rod No.	Standard Plus	Welding Rod No.	Standard Plus	Welding Rod No.
488	1287 441	497	1287 338	913	1287 098	918	1287 593	922	1287 592
492	1291 210	498	1287 027	916	1287 596	920	1287 594	924	1287 446
493	1287 281	911	1287 291	917	1287 5956	921	1287 559		

Powered by

